



Tutorial: Adding Safety Chain

Created By Bobbi Maw

<http://MyWiredImagination.Etsy.com>

<http://MyWiredImagination.Artfire.com>

<http://www.Imaginations-Jewelry.com>

Please do not distribute, lend or copy. Do not mass produce. Please always give credit to the designer.

Copyright 2009 BOBBI MAW.

This step by step tutorial was written to add safety chain to my Swarovski style bracelet, but can easily be adapted to many different styles of bracelets. The techniques shown in this tutorial will work for any bangle where the ends are wrapped, with or without a clasp. Techniques shown are for adding safety chain only; it doesn't cover creating the entire bracelet. The tutorial assumes you either have the Swarovski Crystal Bangle tutorial, or know this style.

Materials suggested:

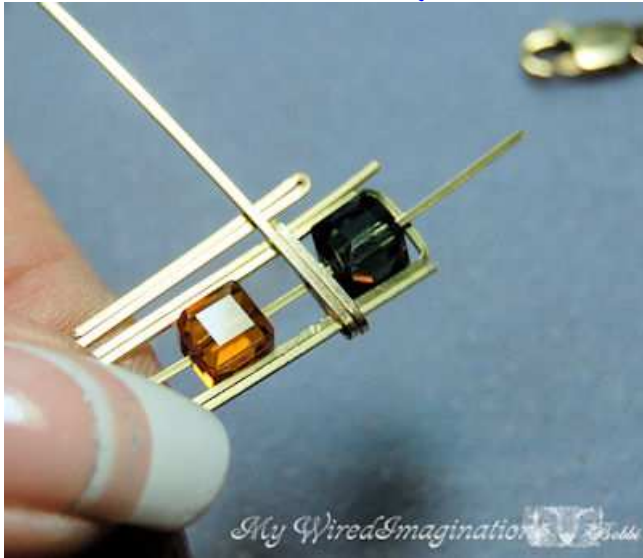
- ✚ 1 ½ inch scrap wire 14 to 16 gauge
- ✚ Or a 14 to 16 gauge nail
- ✚ 2 inches thin chain, any style but box chain.
- ✚ 2 - 5 or 6mm jump rings
- ✚ 1 small clasp of your choice

Tools needed:

- ✚ Ruler
- ✚ Cleaning cloth
- ✚ Chain nose pliers
- ✚ Flush wire cutters

Please read through this tutorial in its entirety at least once before you cut any wire.



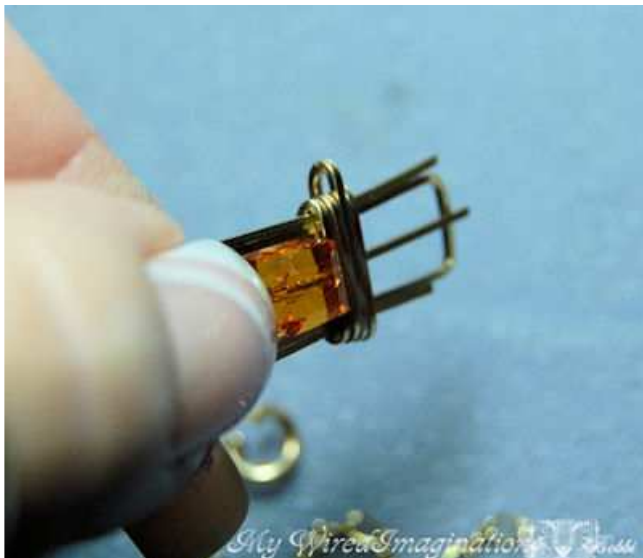


Step 1: We'll start with adding chain to the beginning of making your bracelet. It can also be added to a completed bracelet. (We'll cover that later).

After you have placed 2 wraps on the bracelet end, placed 2 wraps on the bracelet end, take the scrap piece of wire and hold it parallel to the bracelet, under the wrap wire. Note: If you don't have a heavy gauge piece of wire, you can use a smaller gauge folded in half.



Step 2: Make one full wrap over the scrap wire and the rest of the bundle.



Step 3: Remove the scrap wire and finish wrapping the end of the bracelet. The scrap wire has left a loop to fasten to.

You'll finish your bracelet and wrap the opposite end in the same fashion. Pay close attention that both loops are on the same side of the bracelet, so the chain doesn't cross under the clasp when fastened.



Step 4: If you're adding chain to a previously finished bracelet, carefully remove the existing end wraps. (It's not scrap – it's potential Old-Fashioned Chain☺) Place 2 full wraps, and line up your scrap wire or nail as in step 1.



Step 5: Wrap over the nail the same as in Step 2.



Step 6: Remove the nail, and finish the wrapping as in Step 3.



Step 7: Open one of the jump rings, attach it one of the loops and close it.



Step 8: With your chosen clasp on one end of the chain, open the other jump ring and attach it to the free end of the chain.



Step 9: Attach the jump ring with chain and clasp to the other loop formed on the other end of the bracelet.



Congratulations – You’ve added a professional looking safety chain to your bracelet. Even if you don’t actually need the extra security, the safety chain adds an extra little touch of class. 😊



Add safety chain to all your labors of love, regardless of the style they were created in.

(Handmade 'box clasp' on a double wide Byzantine Watch band created by Bobbi Maw.)

I hope you’ve enjoyed this tutorial.

For any comments or questions, or you need any help at all, don’t hesitate to contact me at bobbiwired@gmail.com

copyright 2009 Bobbi Maw/MyWiredImagination. All rights reserved. These instructions are for personal use only. Reproduction and or distribution of these instructions in whole or in part, in any form, without the author's written consent, is strictly prohibited.